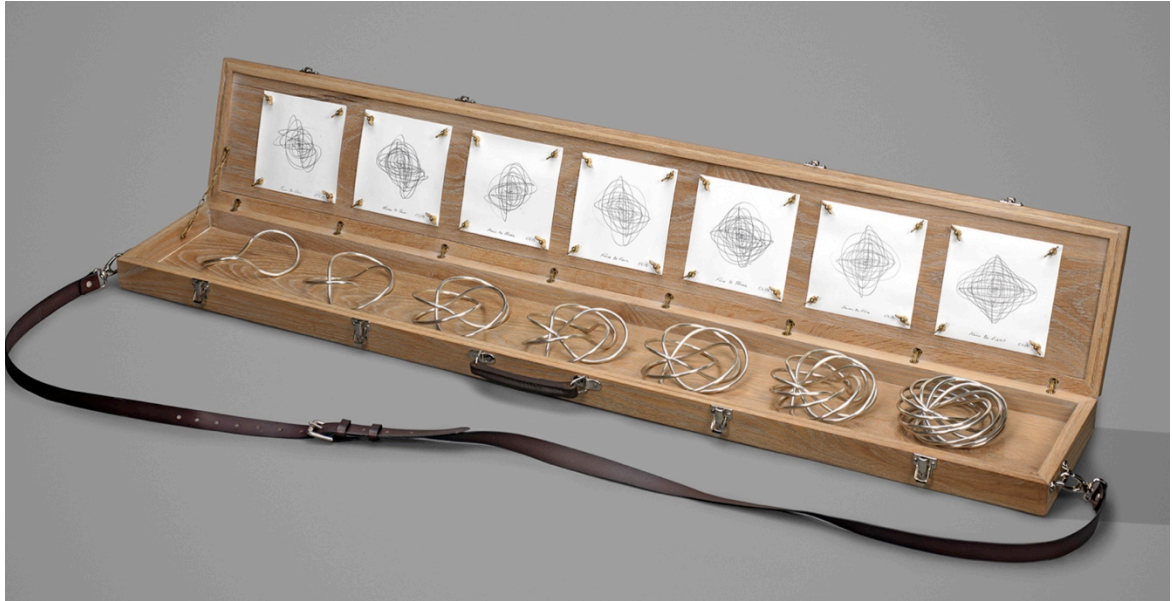


# LOUISA GUINNESS GALLERY

PRESS RELEASE: 23<sup>RD</sup> MAY



CONRAD SHAWCROSS – SEVEN DAYS

THURSDAY 6<sup>TH</sup> JUNE- 28<sup>TH</sup> JUNE

OPENING RECEPTION THURSDAY JUNE 6<sup>TH</sup>, 6-8.30PM

Louisa Guinness Gallery is pleased to present 'Seven Days' by Conrad Shawcross. This new work is a definitive addition to the genre of artist's jewellery; wholly sculpture and jewellery it represents the artist and the gallery at their very best. The hand made oak box holds seven solid silver bracelets, each of which represents a chord in the western chord sequence. These can be worn as a single piece or in combination.

'Seven Days' continues the artist's 'Harmonic Series' in which he explores and visualises the mathematics intrinsic to music. The piece derives from a large mechanical work, '*Loop System Quintet*', created in 2005 for the New Art Gallery, Walsall, which is now in the permanent collection of MONA, Tasmania. The installation is made up of five identical fast spinning articulated arms of oak. Mounted on the tip of each arm is an electric bulb, and at the base a bevel gear. Each gear is set to a different ratio corresponding to those found within the western chord sequence; the second (9:8), the third (5:4), the fourth (4:3), the fifth (3:2), and the major sixth (5:3).

As each arm rotates, the various ratios of the bevel gears cause each arm to extrude a different path in space. These were originally captured

# LOUISA GUINNESS GALLERY

photographically using time lapse and time splicing. These knots of light are known as 'drones' in music.

In 'Seven Days', Shawcross extends the range of his 2005 piece to represent the entire octave, except unison (1:1). Each chord sequence is rendered in a continuous loop of solid silver. The structure of these forms become more complex until the final piece forms a densely packed circle of undulating metal. Any of these can be taken from their sequence and placed on the wrist. Each loop sits, according to its ratio, in ascending order in a dedicated box. In the lid, adjacent to each loop is the two diminutional transcription of the same chord created by a pendulum driven drawing machine.

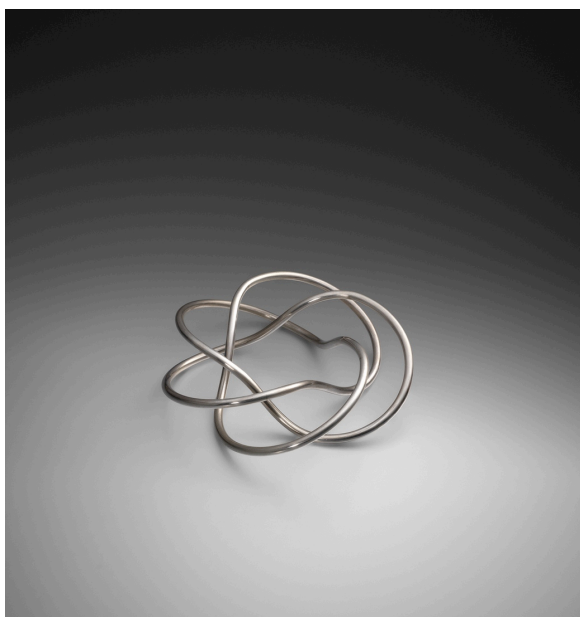
Because of the title, each piece inevitably becomes associated with the chronology of the weeks, and further exploits the artist's use of the sequence to create a control.

## **THE ARTIST:**

London born Conrad Shawcross first came to public attention for his piece 'Nervous System' in 2003, which was subsequently shown at the Saatchi Gallery 'New Blood' exhibition in 2004. Since then his work has been internationally exhibited and is included in important private and museum collections around the world including the British Council, Tate and Royal Opera House in London, MUDAM, Luxembourg and Museum of Old & New Art, Tasmania. Shawcross is best known for his sculpture inspired by the relationship between philosophy, physics and mathematics. He was the Artist in Residence at the Science Museum, London (2009 - 2011).

Conrad was born in 1977 in London, where he currently resides and works. He received his B.A. in Fine Art in 1999 from the Ruskin School of Art, Oxford, and his Master of Fine Arts in 2001 from the Slade School of Art, University College, London. Shawcross has had solo presentations at 590 Madison Avenue, Pace Gallery, New York, (2010), Cabinet, Brooklyn (2009); Location One, New York, New York, (2009) Jenaer Kunstverein, Germany (2008), The New Art Gallery, Walsall and The Walker Art Gallery, Liverpool (2005). His work has also been exhibited internationally at institutions including Musée d'art Contemporain, Lyon (2008), La Chapelle de L'Ecole National Supérieure des Beaux-Arts de Paris (2008), The Saatchi Gallery (2004) and Manifesta 5, San Sebastian, Spain (2004). Shawcross's first public realm commission; Space Trumpet installed in the atrium of the refurbished Unilever Building, London in 2007 won the Art & Work 2008 Award for a Work of Art Commissioned for a Specific Site in a Working Environment, and in 2009 he was awarded the Illy prize for best solo presentation at Art Brussels. Shawcross was the Artist in Residence at the Science Museum, London from 2009-2011.

# LOUISA GUINNESS GALLERY



## IMAGES:

Top:

Loop System Quintet (2005)  
oak, steel, mechanical system, lights  
dimensions variable

Courtesy the artist, The New Art Gallery, Walsall  
and Victoria Miro Gallery, London

Photography by Conrad Shawcross and Jonathan Shaw

# LOUISA GUINNESS GALLERY

*Seven Days*

silver

each approx. 14cm. diam.

displayed in dedicated oak box, lined with series of seven pendulum driven drawings by the artist

box; 21.1 x 131.5 x 7.5cm

pendulum drawings; signed and inscribed (bottom centre and bottom right),

pencil on paper, 14 x 14cm

edition of 10

2 bracelets of seven are editions of 15

## CONTACT

Press enquiries:

Cecily Motley

[Cecily@louisaguinnessgallery.com](mailto:Cecily@louisaguinnessgallery.com)

Louisa Guinness Gallery

C/o Ben Brown Fine Arts

21 Cork Street

London

W1S 3LZ

T: (0) 207 494 4664