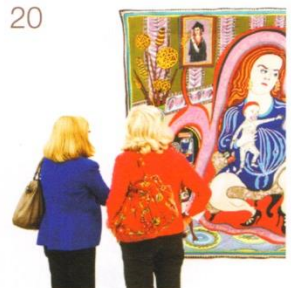


Mayfair Times
 Mayfair's house magazine for 28 years – made in Mayfair
 www.mayfairtimes.co.uk
 www.mayfairpa.com

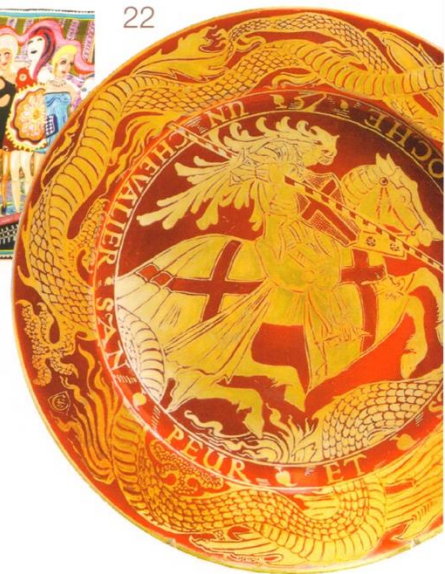
Contents



20



22



20 Mat Collishaw
 The artist joins other leading experts at our lunch to discuss the future of Mayfair's art scene
 Cover picture by Robert Greshoff, taken at the new London Edition hotel in Berners Street

26 Kate Adie
 The veteran war correspondent celebrates the contribution of women in WW1

20 Art fairs
 Frieze and PAD bring the best of the art world to Mayfair



26

6 News
 London's Luxury Quarter knocks Europe off the top spot and Mayfair rocks fashion week

12 Events
 Quiz Jeremy Paxman and see what's in the cards at a tarot night. Plus: singer Jessica Sweetman

16 Theatre
 Why "immersive theatre" company Punchdrunk is the toast of London and New York

24 Design
 Enter the quirky world of David Gill, where furniture comes alive

30 Food
 How Pierre Hermé revolutionised the macaron. Plus: all the latest food news

33 Venues
 How to ensure your company's Christmas party goes with a bang

40 Fashion
 The fashion pack's insatiable thirst for tweed and flat caps

44 Wish list
 A new Audi and a Smythson tote are among things we're coveting

48 Travel
 Mayfair's take on the Big Apple

52 Health & beauty
 The Bodydoctor who shrinks the waists of the rich and famous

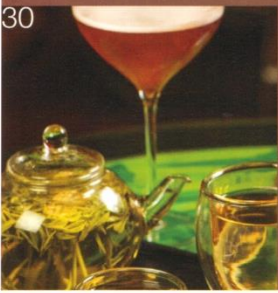
56 Parties
 Mayfair Times enjoys Peruvian canapés at Coya, Piccadilly

66 Business
 Grosvenor's Haydn Cooper on the changing face of Mayfair

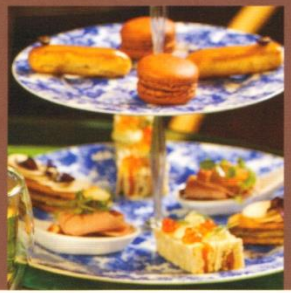
71 Property
 Why the price of Mayfair property has more than doubled. Plus: buy Alexander McQueen's flat, p.108

114 Interiors
 The best autumn buys, from snug throws to comfy chairs

116 Direct lines
 Adrian Day considers the arbiter of men's fashion, Beau Brummell



30



Editor Selma Day
 T 020 7259 1052
 E selma@pubbiz.com

Writers Nuala Calvi, Tom Chamberlin, Sophia Charalambous, Lorna Davies, Abi Millar, Selma Day, Elena Seymenlyska, Kate White

Sub-editor Nuala Calvi

Designer Andy Lowe

Publisher Adrian Day
 T 020 7259 1055
 E day@pubbiz.com

Advertisement director Sam Bradshaw
 T 020 7259 1051
 E sam@pubbiz.com

Advertisement manager Bridget Rodricks
 T 020 7259 1059
 E bridget@pubbiz.com

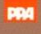
Printed in the UK.
 © Publishing Business Ltd 2013
 Mayfair Times is produced by Publishing Business
 3 Princes Street
 London W1B 2LD T 020 7259 1050

While we always do our best to ensure that firms and organisations appearing in the magazine are reputable, the Editor can give no guarantee that they will fulfil their obligations in all circumstances. Readers must therefore deal with them at their own risk.

Printed on ECF (Chlorine Free) paper using fibre sourced from well-managed forests.

All inks vegetable based. Our Printers are certified to ISO 14001 Environmental Management.

Publishing Business is a member of the Professional Publishers' Association and observes the FPA Code of Publishing Practice.





PAD LONDON ART FAIR DESCENDS ON BERKELEY SQUARE THIS MONTH, BRINGING THE BEST IN 20TH CENTURY ART, DESIGN AND DECORATIVE ARTS FROM AROUND THE WORLD. LORNA DAVIES DISCOVERS SOME OF THE HIGHLIGHTS FROM MAYFAIR GALLERIES



Fair and square

Modern art

Having exhibited artists such as Pablo Picasso, Andy Warhol, Damien Hirst and Lucio Fontana, Ben Brown Fine Arts has positioned itself at the forefront of the contemporary art scene in Mayfair. Opening on Cork Street in 2004, the gallery also has a branch in Hong Kong's Pedder building and has been exhibiting works at PAD since its inception.

"We take part every year because we've done well so far and it's such a great location," says Brown, who began his career at Sotheby's. "It also opens the gallery up to a wider audience. We meet people there who we wouldn't otherwise."

Brown is bringing to the fair what he believes to be one of the best paintings by Fontana to have come on the market for a long time, as well as new pieces by Brazilian artist Vik Muniz and YBA Gavin Turk.

Richard Nagy's list of artists reads like a who's who of the modern art world, with icons such as Francis Bacon, Henri Matisse, Lucian Freud, Vincent Van Gogh, Paul Cézanne and Marc Chagall, to name but a few.

Nagy has been dealing independently since 1980 and started the Dover Street Gallery in 1989. He specialises in the work of Egon Schiele and Gustav Klimt, and will be taking works by both to PAD. "We'll also be taking some Otto Dix, Lyonel Charles Feininger, Ludwig Meidner, Ernst Ludwig Kirchner and a few others," he adds.

Again, the location is vital for Nagy. "London at this time of year is probably the centre of the art world, so it makes sense to wave a corporate flag at an event such as PAD," he says. "You couldn't have a better location. People often come and have a look at our stall and then go to the gallery."

Visitors who make the trip will be treated to a major exhibition dedicated to George Grosz, which the gallery is holding to coincide with PAD. It's the first in the UK since the Royal Academy's retrospective almost 20 years ago, with some 50 works by the titan of German satirical art.

Robin Katz Fine Art on Old Bond Street will also be at PAD, along with Cork Street's The Mayor Gallery, which shows American pop art and European nouveau realism, and remains London's foremost gallery for dada, zero and surrealism.

Contemporary design

David Gill, who owns David Gill Galleries on King Street, knows a pioneering artist when he sees one. Gill championed the likes of Grayson Perry, Marc Newson and Ron Arad before they shot to stardom. He'll be at PAD, as well as in Carpenters Workshop Gallery on Albemarle Street.

The gallery, established in 2005 by Parisian entrepreneurs and art devotees Loic Le Gaillard and Julien Lombraill, is known for its discovery of bold and iconic design-art.





It began life in a former carpenter's workshop in Chelsea, and in 2008 it opened a second gallery on Albermarle Street. Rick Owen's Prehistoric exhibition is on at the same time as PAD, his dark, minimalist style echoing the gallery's design-led approach.

20th century design

Blairman & Sons was established in 1884 and specialises in beautifully designed, documented furniture and works of art from the 18th, 19th and 20th centuries. Director Martin Levy represents the fourth generation of the family-run business on Mount Street, and says PAD's eclectic mix means his stand can represent design at the beginning of the timeline.

"We concentrate on 19th century design, and many of those designers are precursors for what's happening now," says Levy. "So, we're the beginning of the story at PAD, which is absolutely why we chose to do it. It's a new audience for us, and in the two years we've done it so far we've found them extremely receptive."

This year, the gallery is bringing mostly pieces from the English arts and crafts movement, with furniture by Ernest



Gimson and Morris & Co. "We also have ceramics by William De Morgan and a side cabinet by Edward William Godwin, all of whom resonate into the 20th century," says Levy.

Photography

The Hamiltons Gallery on Carlos Place shows modern and contemporary photography. Run by Tim Jefferies and David Peckham, the gallery specialises in mid and late-20th century masters such as Irving Penn, Richard Avedon, Helmut Newton, Herb Ritts and Robert Mapplethorpe, among others.

To coincide with PAD, the gallery is presenting the inaugural London exhibition of works by Swedish photographer Jacob Felländer. The show, on until November 1, marks a shift in his work, with the introduction of drawing and painting – challenging their relationship with photography.

Tribal Art

Entwistle Gallery at 114 New Bond Street is run by Roberta and Lance Entwistle, who have been dealing in African and Oceanic Art for more than 30 years. Pieces from their collections are in New York's Metropolitan Museum of Art, The Art Institute of Chicago and Quai Branly museum in Paris.

Jewellery

The Louisa Guinness Gallery opened last month at 45 Conduit Street, housing an exhibition space dedicated exclusively to jewellery made by artists. This year, the gallery celebrates a decade of collaborations with artists such as Anthony Gormley and Anish Kapoor. All works are made by hand, either in London's famous Hatton Garden or in the artist's studio, and are signed and numbered. The gallery also has a collection of historic jewellery from the likes of Man Ray and Picasso.

PAD is at Berkeley Square from October 16-20. Tickets £20. www.pad-fairs.com

CLOCKWISE, FROM TOP LEFT:

SONGYE FIGURE N'KISHI, C. 1880 COURTESY OF ENTWISTLE

ANISH KAPOOR, ATLAS RING, (ROUND), 2012

COURTESY OF LOUISA GUINNESS GALLERY

GUIDO MOCAFICO, LEOPOLD AND RUDOLF BLASCHKA, CHRYSOSAORA HYSOSCELLA, 2013 COURTESY OF HAMILTONS GALLERY

VIK MUNIZ, FLOWERS AND FRUIT, AFTER PIERRE-AUGUSTE RENOIR

(PICTURES OF MAGAZINES 2), 2013 COURTESY OF BEN BROWN FINE ARTS

CHARGER - UN CHEVALIER SANS PEUR ET SANS REPROCHE,

DESIGNED BY WALTER CRANE, C.1906